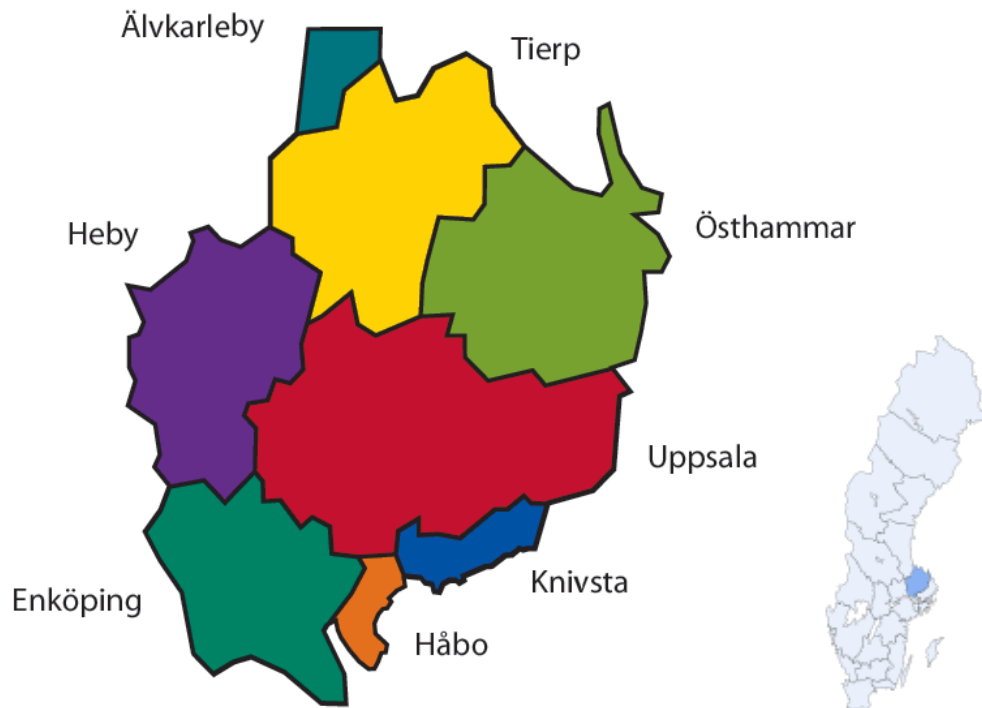




Region Uppsala

Where knowledge
and people grow
together



Uppsala County

- The County of Uppsala consists of eight municipalities.
- The County has a total population of approximately 400,000 inhabitants.
- We are one of Sweden's fastest growing regions!

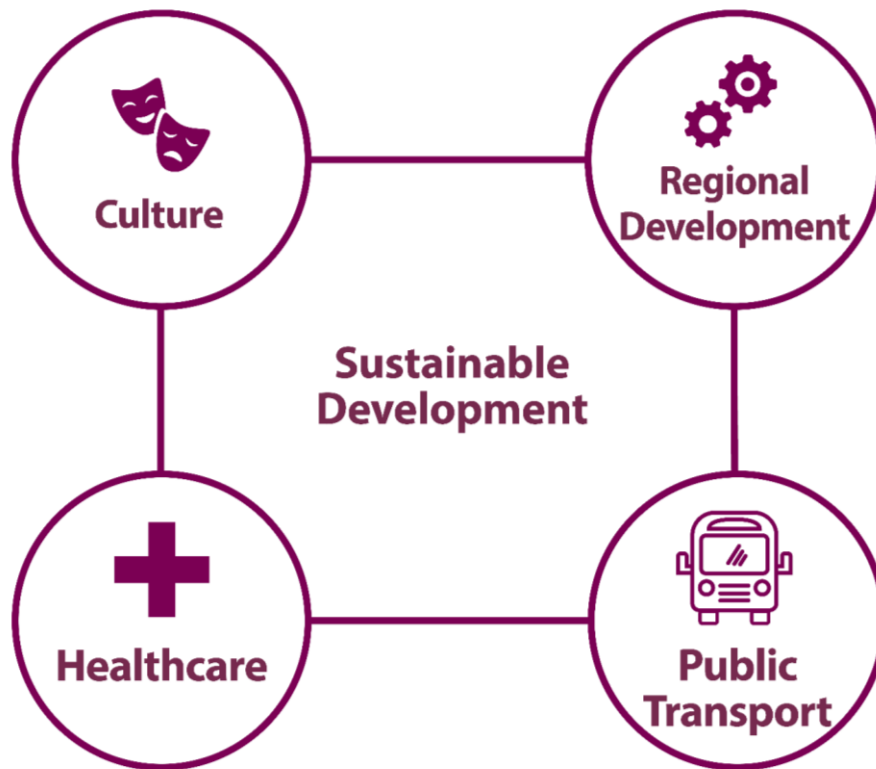
Our Vision

A good life in an innovative knowledge-based region, with an international presence.



What we do

Region Uppsala exists to serve the people of Uppsala County. Our goal is to create conditions for good health and sustainability for everyone living and working here.



Running key services for society...

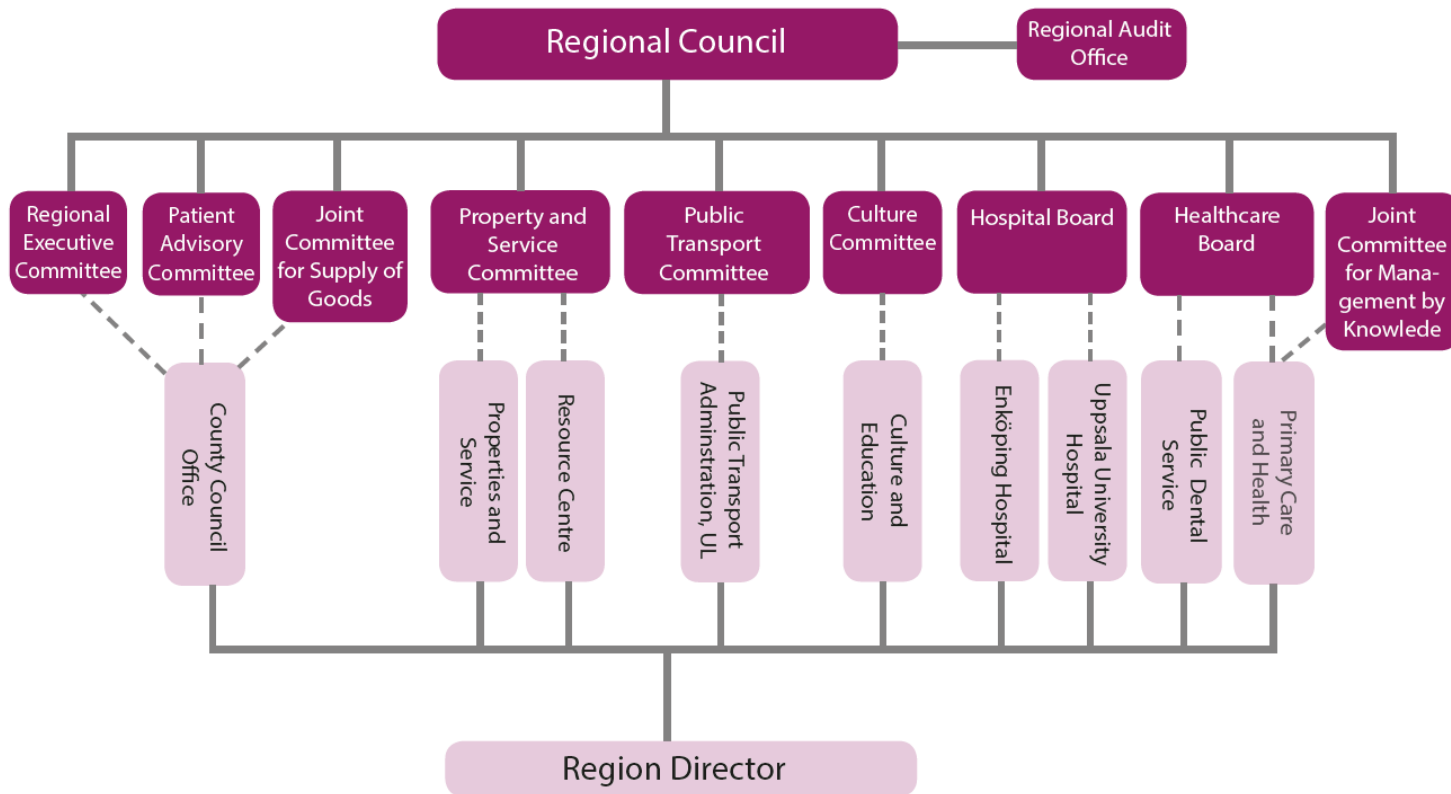


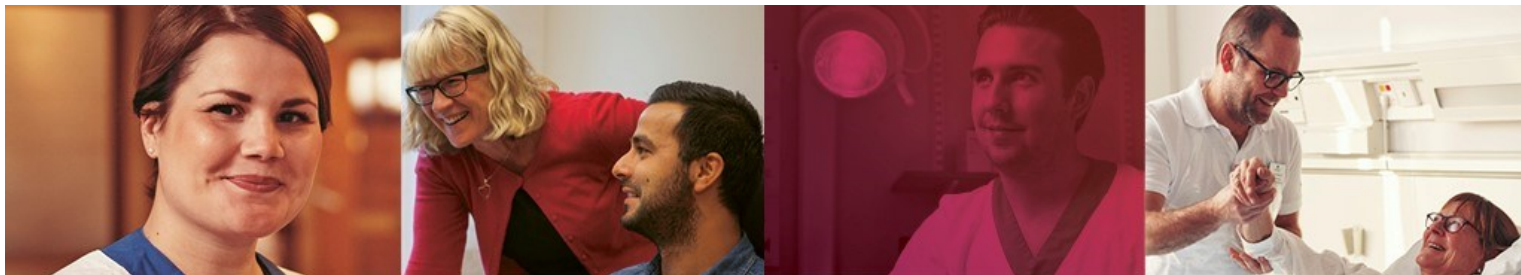
...helping development throughout the county



A democratically governed organisation

- A politically governed organisation
- The highest governing body is the Regional Assembly
- The Regional Assembly decides on a regional plan and budget (RPB)
- Civil servants implement the political decisions
- Region Uppsala has employees and elected auditors





Where knowledge and people grow

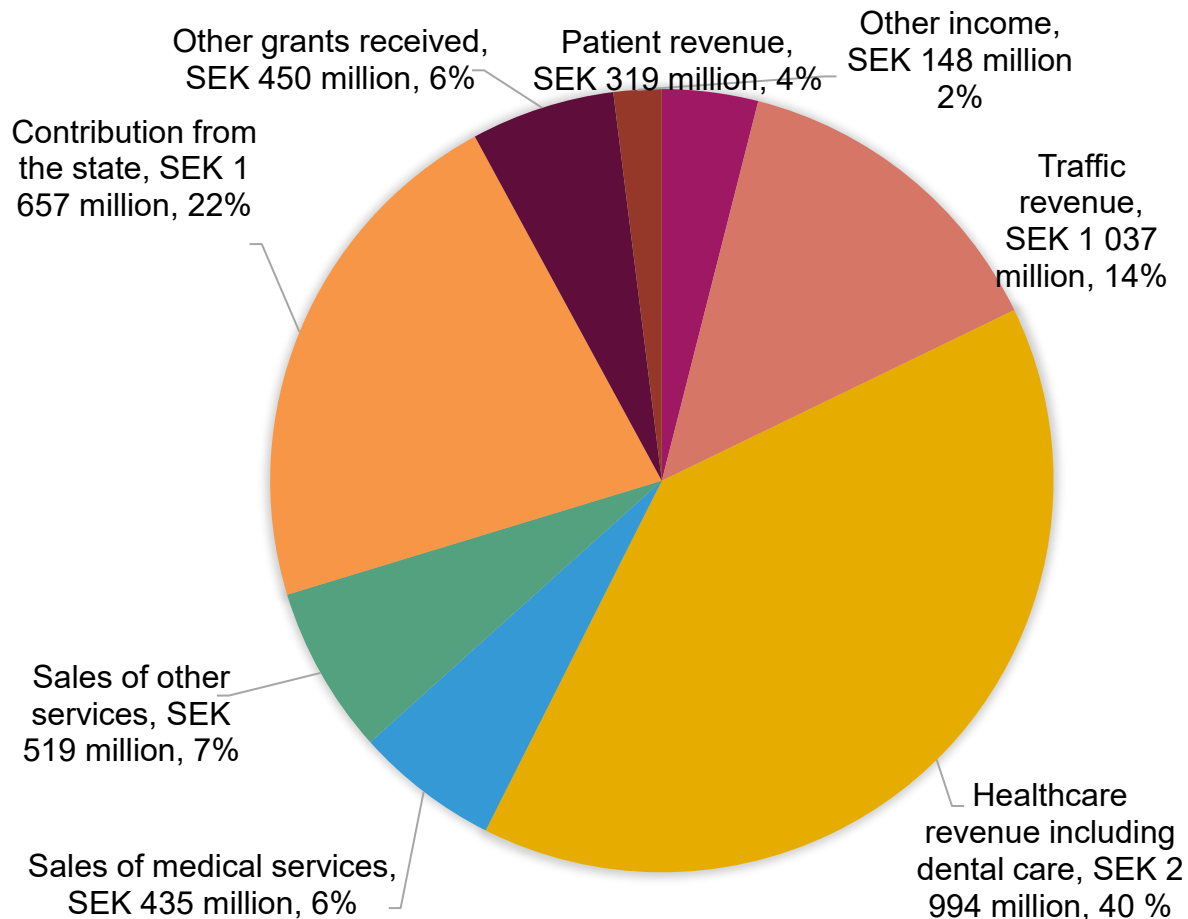




Region Uppsala

Economy – revenue 2022

SEK 7 559 million
(~6.7 billion EUR)

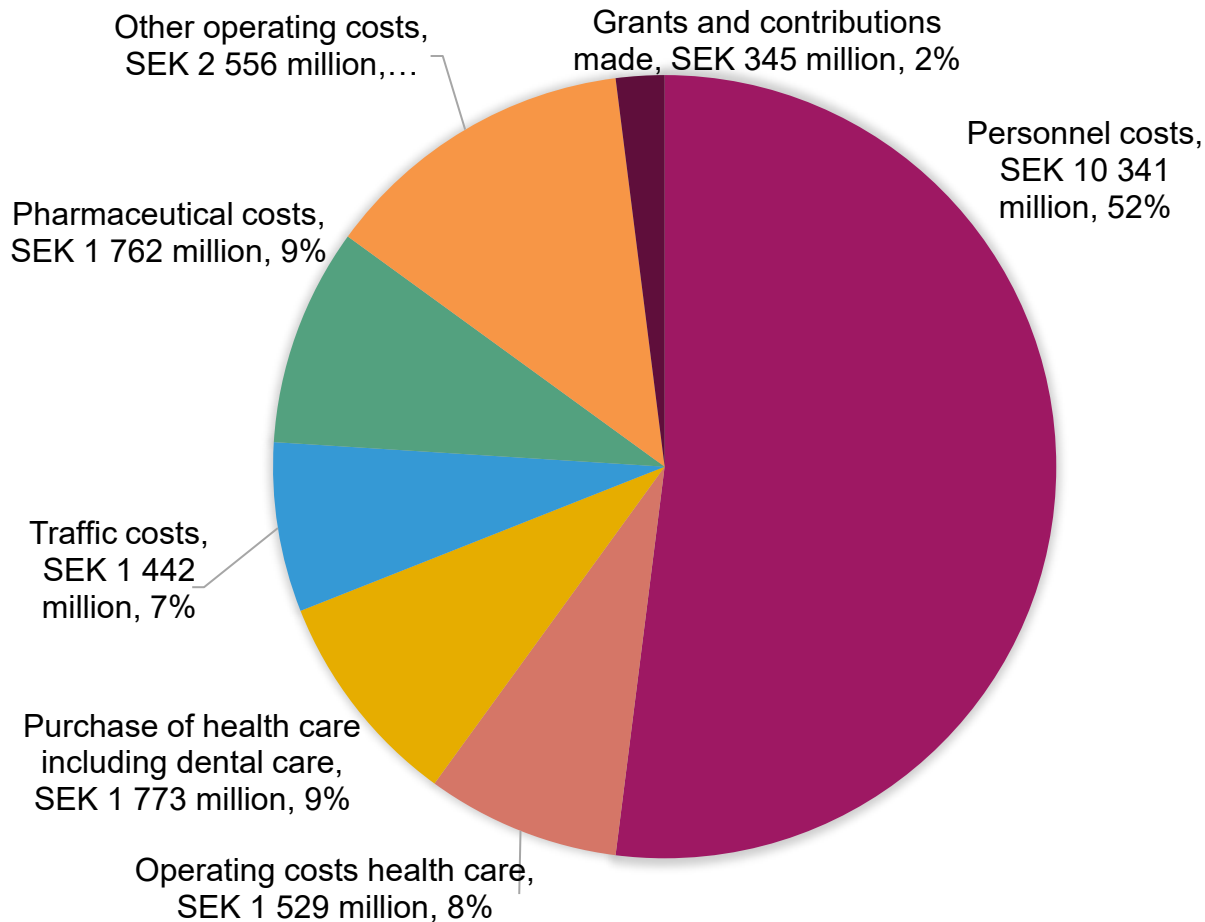




Region Uppsala

Economy – costs 2022

**SEK 19 564 million
(~1.7 billion EUR)**





**What does
healthcare
really cost?**

- A 30-minute visit to a specialist at the surgery clinic:
5,590 kronor, of which patient fees are 330 kronor.
- A birth with no complications:
19,710 kronor, of which patient fees are 100 kronor per day
at the hospital.
- A visit to the doctor at the healthcare centre:
1,970 kronor, of which patient fees are 150 kronor.

Future healthcare to be closer to the people

- Better availability and accessibility
- By 2030, care that is effective and close by
- Target image for primary care of the future
- The University Hospital of the future



An average
day...



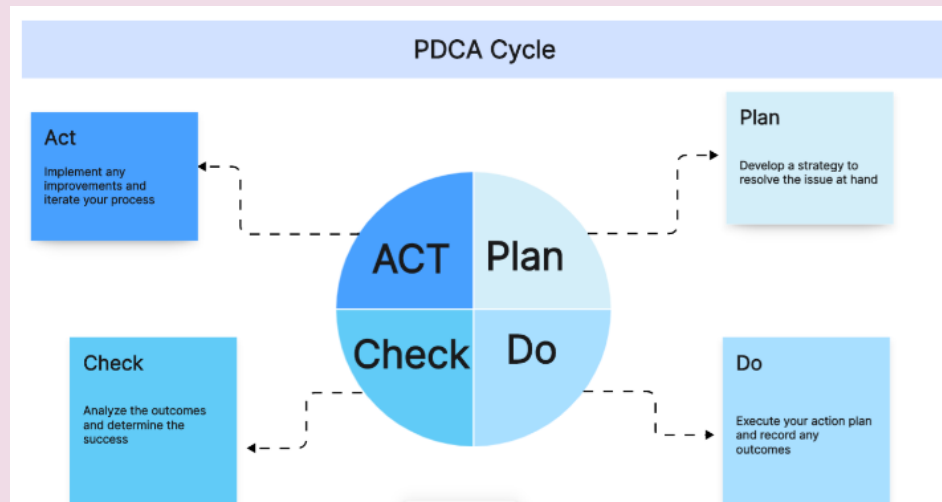
Sustainability and environment

- certified Environmental management system since 2005



Environmental management system

- Never static – always in development.
- Becomes clearer through delegation of responsibilities
- Systematic work with fulfilling legal requirements, and environmental goals





Region Uppsala

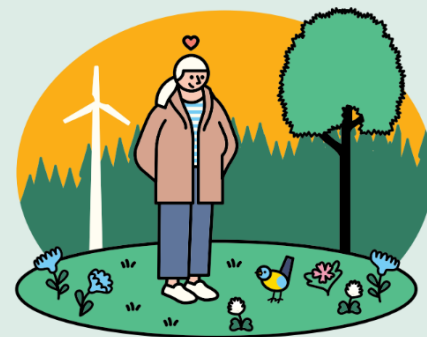
Programme for environment and sustainability 2023-2026

- **Reduced climate impact with at least ten percent each year**
 - Transportation
 - Energy
 - Consumables
 - Medical gases
 - IT Equipment
 - Asset management /finances
- **Healthy and non-toxic environment**
 - Chemicals
 - Medicines
 - Food and textiles
 - Indoor environment
- **Sustainable and effective resource management**
 - Environmentally adapted properties
 - Water
 - Biodiversity

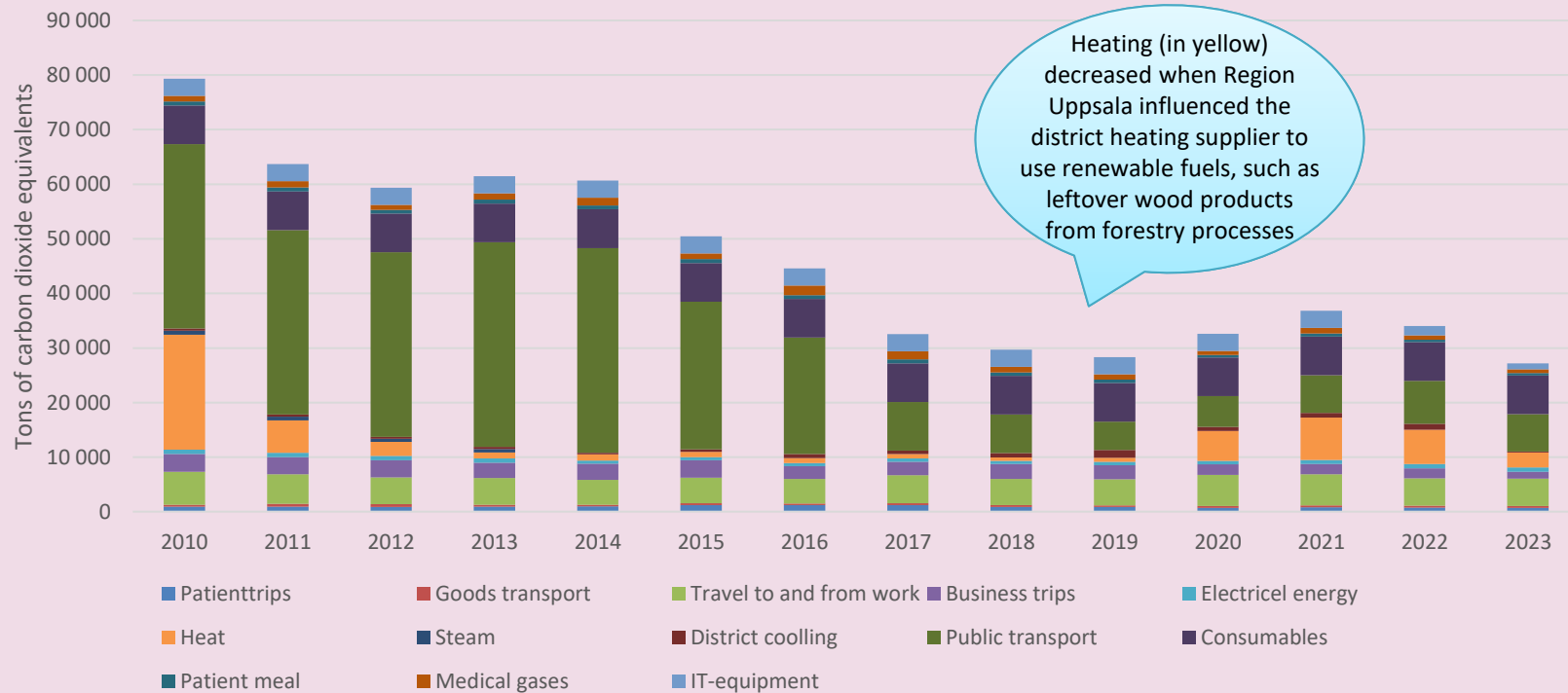
 Region Uppsala

Program för miljö och hållbarhet

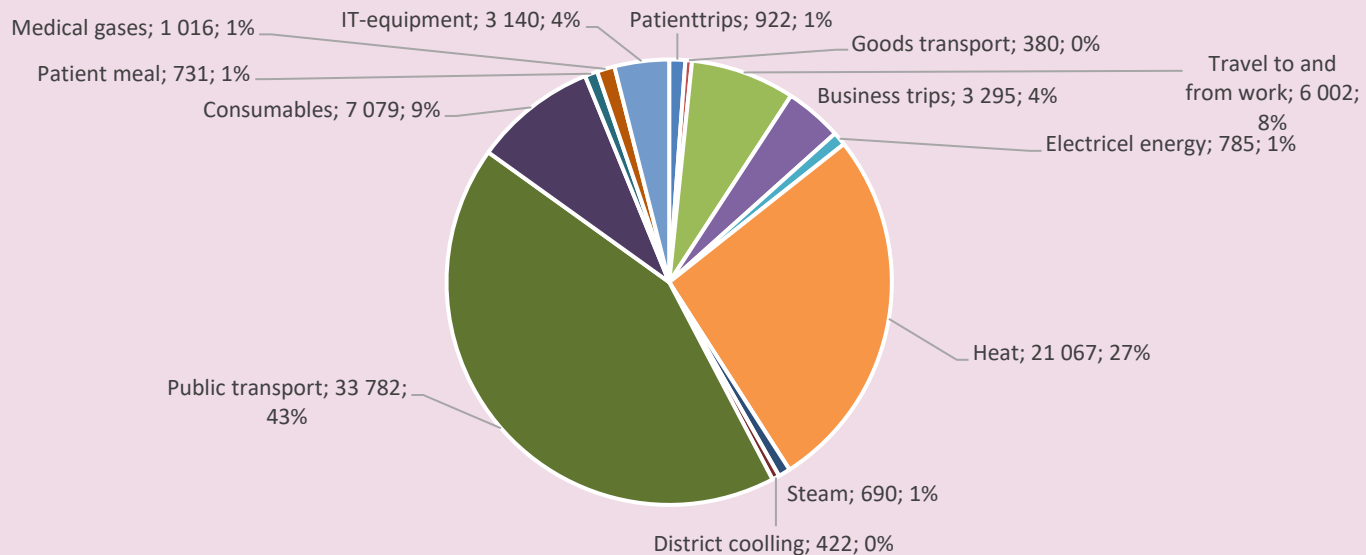
2023–2026



Climate emissions (measured) Region Uppsala

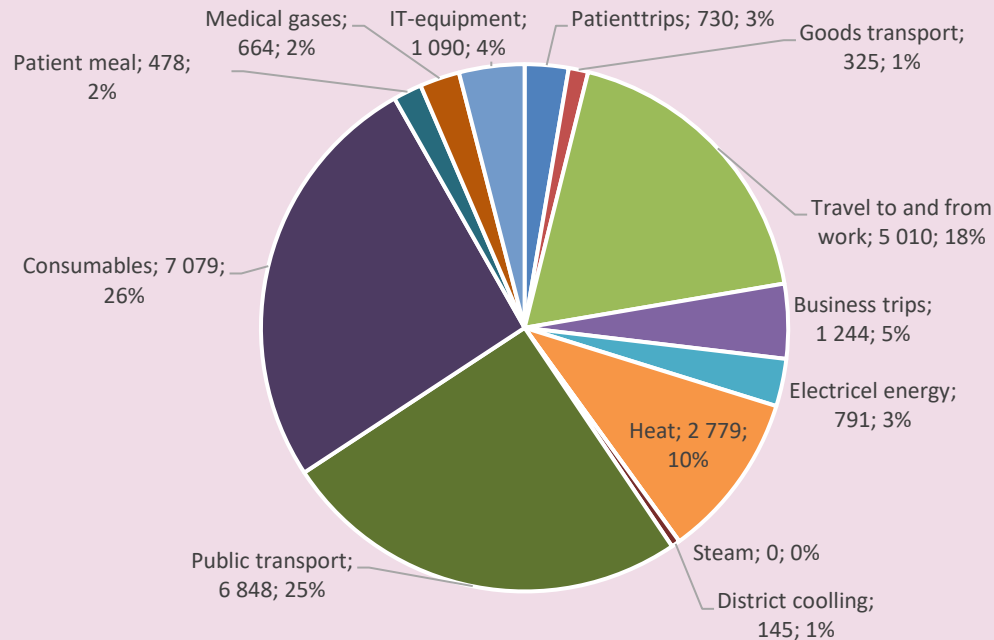


Comparison 2010





Comparison 2023





Region Uppsala

Healthy and non-toxic environment

- The use of chemicals of very high concern, and medicines with environmental consequences is less
- 64 percent of food is ecological (organic)
- Less food waste
- 47 procent ecological textiles
- More consumables without information of phthalates (plasticizers) – probably due to concerns related to the war in Ukraine and connected border issues





Region Uppsala

Sustainable and effective resourcemanagement

- More environments planned with concern of biodiversity and ecosystem services (pollinators, for instance)
- 80 % eco-labelled construction products
- Less water use in all areas (except the Akademiska hospital)
- Develop goals to decrease climate impact when constructing buildings





21 regions

Responsible for:

- Healthcare**
- Regional development and growth**
- Public transportation**

250 000 employees

Procure goods and services for

10.5 billion EUR

National coordination since 2010

- **Same Code of Conduct**
- **Same Contract Terms**
- **Same follow-up process**
- **Sharing of results**
- **Steering group with Procurement managers and Environmental managers**



Region Uppsala



Code of Conduct

Human rights

Employee rights

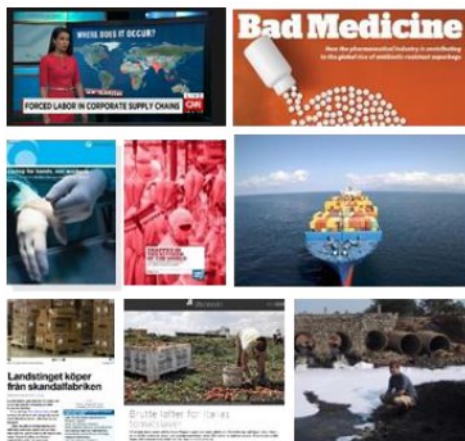
Environment

Anti-corruption

Based on UN Declarations and Conventions



Risk Area Responsibilities



Risk Analysis



Action plan every three years, with:
Priority of risks and goals



Monitoring and follow-up

| Övergripande material och tjänster | Fastighet | IT & Kommunikation | Fordon | Transporter | Facility Management | Vårdrelaterad utrustning och förbrukningsvaror | Läkemedel och tillhörande tjänster | Vård- och tandvårdsrelaterade tjänster | Medicinteknik och relaterade förbrukningsvaror |
|------------------------------------|--------------------------------------|--|-------------------------------------|--------------------------|---|---|---------------------------------------|--|---|
| Resor och möten | Energi | IT – Teknisk plattform (Område C) | Fleet management | Drift av kollektivtrafik | Lokalvård (Område B) | Diabetespecifika förbrukningsvaror | Dosdispensering | Vårdrelaterade bemanningstjänster | Medicinteknik Anestesi och intensivvård och rel. Förbrukningsvaror (Omr. G) |
| HR | Bygg och fastighet | IT-konsulter | Personbilar | Logistik och transport | Outsourcing facility management | Generella förbrukningsvaror (Område A & F) | Läkemedel (Område E) | Offentliga vårdgivare | Medicinteknik Bild och Funktion och rel. Förbrukningsvaror (Omr. C) |
| Konsulttjänster | Köksutrustning | IT-Mjukvara vårdrelaterad och eHälsa | Bussar | Persontransport | Byggservice och underhållningstjänster | Hjälpmedel | Läkemedelsförsörjning sjukhus | Barn- och ungdoms-medicinska specialiteter | Medicinteknik Operation och rel. Förbrukningsvaror (Område G) |
| Kommunikation | Teknisk infrastruktur | IT-Administrativt stöd | Drivmedel | Utryckningstransporter | Marksötsel | Inkontinens (Område F) | Medicinsk gas och tillbehör | Bild- och funktions-medicinska specialiteter | Medicinteknik Terapi och diagnostik och rel. Förbrukningsvaror (Omr. G) |
| Finans | Utrustning för textiltvål | IT- Arbetsplats (Område C) | Fordonsunderhåll | | Flyttjänster | Nutrition (Område B) | Övriga läkemedels-relaterade tjänster | Invärtmedicinska specialiteter | |
| Kontor | Fastighetsrelaterade konsulttjänster | IT-Licenser | Lastbilar | | Post | Medicinsk grundutrustning (Område A) | | Kirurgiska specialiteter | |
| Kultur | | Mobila applikationer | Ombyggnad av fordon | | Övrigt facility management | Särvård och kompression (Område D) | | Laboratoriemedicinska specialiteter | |
| Sponsring och avgifter | | IT-mjukvara/hårdvara och kommunikation för kollektivtrafik | Tåg | | Avfallshantering | Tandvårdsutrustning och förbrukningsmaterial (Område D) | | Neurologiska specialiteter | |
| Naturbruk | | | Utryckningsfordon | | Bevakning, säkerhet och värde transporter | Fysioterapiutrustning och material | | Psykiatriska specialiteter | |
| Skolverksamhet | | | Övriga fordon | | Livsmedel och tillhörande tjänster (Område B) | | | Tandvård | |
| | | | Övriga fordons-relaterade kostnader | | Tvätt och textilier (Område H) | | | Tilläggsspecialiteter | |
| | | | Fartyg | | | | | Primärvård | |

Darker boxes = identified focus areas

Monitoring agreements



Self-assessment
Processes and
routines



Office audit
Verification and analysis
of answers from self-
assessment



Factory audit
Production – do
routines have
desired effect?

What happens next?

If deviations are detected:

In the first instance, correction is requested

- Supplier makes a detailed action plan including timeline, verification process, and person responsible for corrections
- Customers approve action plan
- When a deadline has expired, the client / auditor reviews the certificate. If necessary, re-auditing is planned
- A report on non-conformity management is prepared and attached to the original report

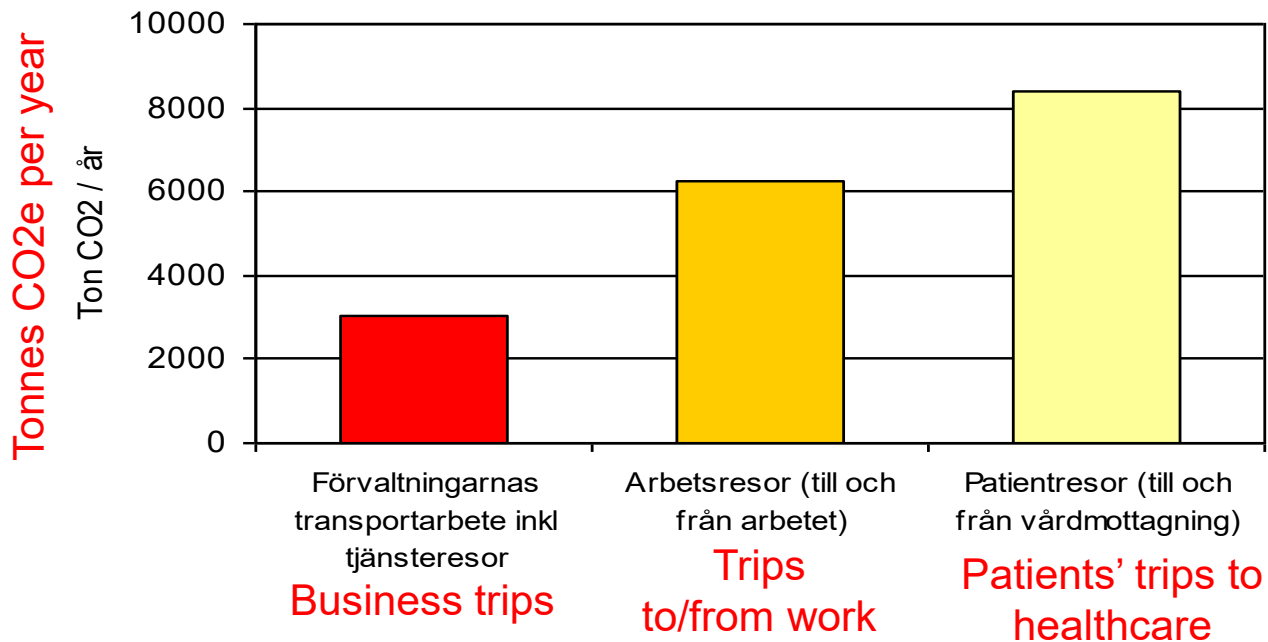
If correction does not take place - decision on possible sanctions.

Other forms of transportation and sustainability work



Region Uppsala

Started 2003



Patient trips

Free trips to health care for the patient and one helper (relative or friend). Currently approx 1100 trips per day to the main Akademiska hospital. Tickets available in the mobile app with instructions provided on the doctor's appointment letter.

During the procurement process for patient transportation – require fossil fuel free transport (higher percent for every year)

Travel to and from work

- **Friendly competitions to encourage employees to bicycle, walk and take public transportation to the office**
- **Salary benefit for employees to purchase bicycles and/or yearly public transportation tickets at discounted prices**
- **Campaigns followed-up by representative survey of employees in collaboration with the university, since 2006**

Business trips

- **Clear travel policy since 2003**
 - Employees should not travel by airplane within Sweden
 - Prioritise cycle/walking/public transportation for shorter trips and train for longer trips
- **Respective leadership groups follow-up on fuel usage**
- **Internal climate change compensation** - a surcharge is added for business trips to the three most common destinations in Sweden, and the funds in this account are then used for climate-positive activities

Public transport in constant development





UL in brief: public transport

- A county resident makes an average of 93 trips per year, and public transport has a total of approx. 36 million arrivals.
- The total distance traveled by all UL buses is 41.5 million km per year – more than 1,000 laps around the world, which is just under three laps per day.
- A total of 1,500 employees work in public transport and the business has a turnover of just over 2 billion SEK.
- Every day there are 2,800 departures in the city bus service and 2,900 departures in the regional bus service. Region Uppsala also finances 147 departures with Mälartåg (regional train) and 160 departures with the SL shuttle train to Stockholm.

What have we achieved?

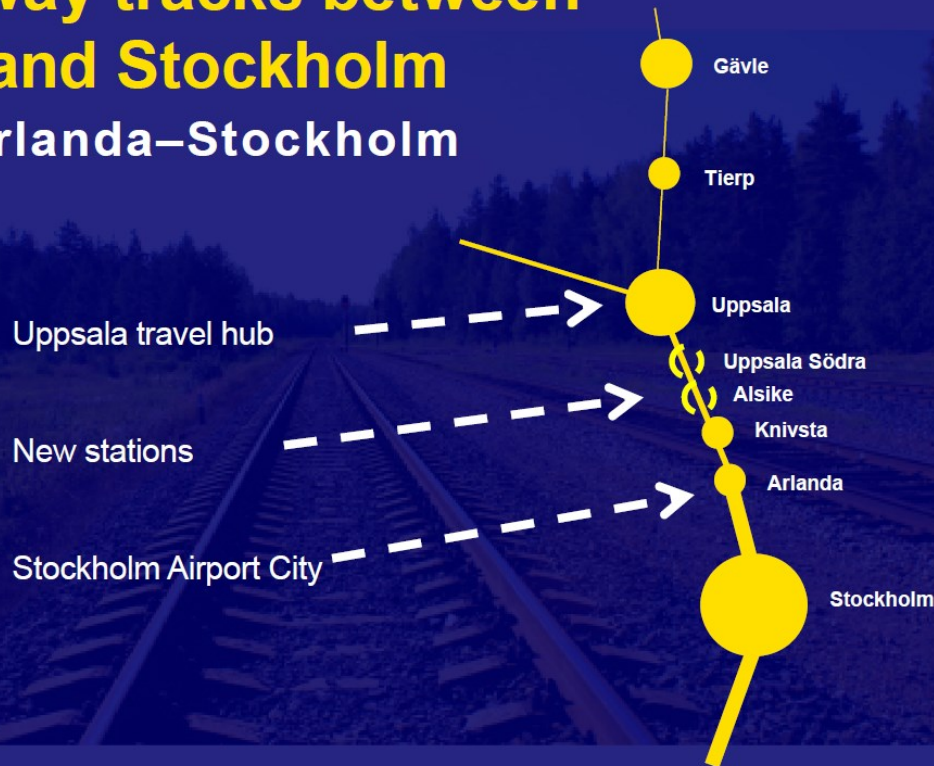


Fuel strategy: prioritise fossil free, renewable, and locally produced

- **Uppsala County's 550 buses are currently 99.25% fossil-free**
- 200 green city buses run on
 - Biodiesel (HVO, vegetable oil and animal fat byproducts)
 - Biogas (70% produced locally in Uppsala from e.g. food wastes)
 - Electricity (currently 36 BEV)
- 200 regional buses run on biodiesels HVO and RME, and biogas
- Trains run on electricity certified from Nordic renewable sources


Four railway tracks between Uppsala and Stockholm

Uppsala–Arlanda–Stockholm



Public transport & sustainability

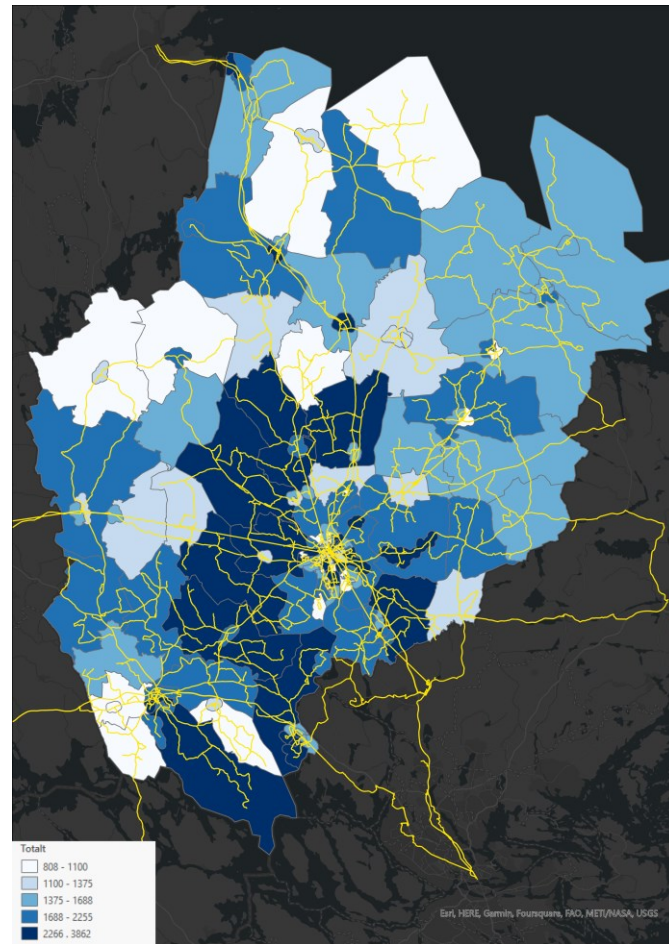




How can we best
provide public services
in an inclusive and
sustainable way, while
minimising negative
environmental impact?

Uppsala County

- Inhabitants:
 - 400,000 in the entire county
 - 240,000 in Uppsala City
- Public transport:
 - 50% trips city buses, 25% by train, 25% with regional buses (approximately)
 - Uppsala's regional buses travel 150,000 km per year, approx 2x Sweden's average
 - Bus fleet = approx. 550 buses in three large contracts (regional traffic, city traffic, school buses)



**On a normal weekday,
riders travel 132 837
kilometers with UL's
buses which is the
equivalent of 3 times
around the Earth.**

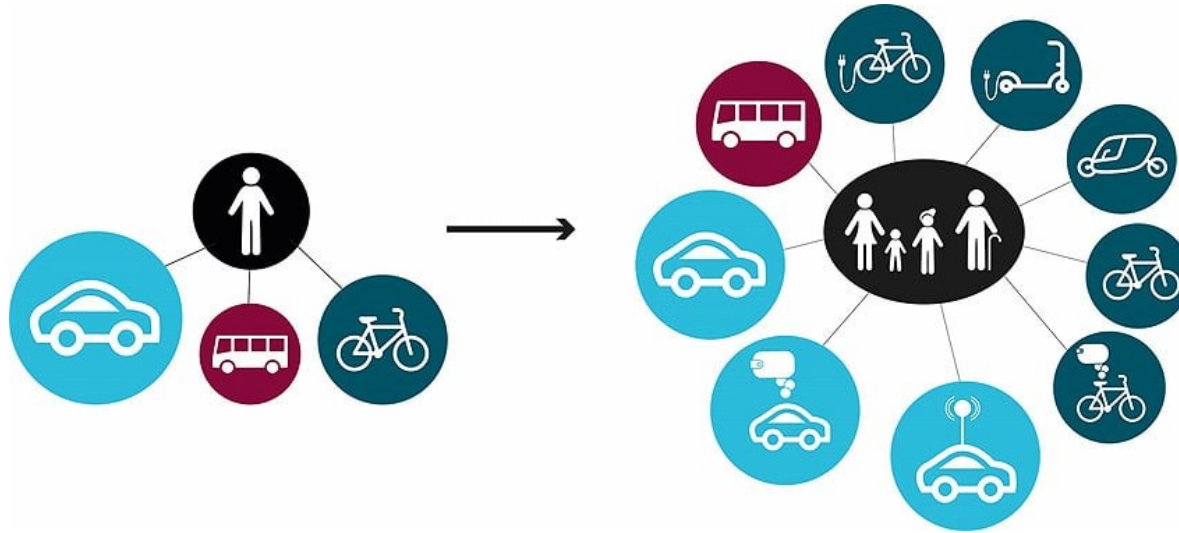


Tools for sustainability

- Procurement: the requirements established in new contracts
 - 100% fossil-free fuels
 - Sustainable supply chain
 - Suppliers must have an environmental policy
- Technical solutions & innovation
- Collaboration!



Mobility and the Entire-journey perspective





Sustainability values... but also conflicts

- Accessibility
- Environmental benefits
- Traffic flows
- Economics
- Social inclusion
- Urban development
- Public health

Questions?

Thank you!

Marta Fallgren,
Environmental Manager

marta.fallgren@regionuppsala.se



Evan Mitchell
Environmental Strategist

evan.mitchell@regionuppsala.se